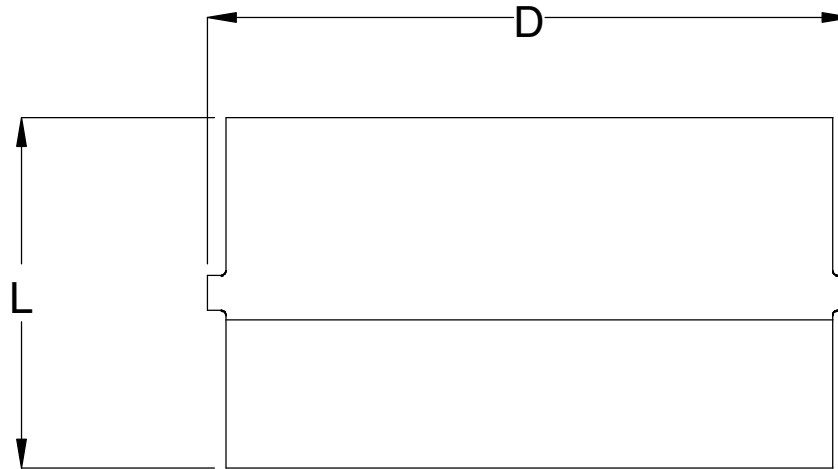


SIZE	L	D
2"	11.7	3.94
3"	11.5	5.0
4"	11.5	6.0
6"	15	8.6
8"	17.63	10.63
10"	16.64	12.5
12"	22.38	14.38
14"	22.25	16.93
16"	22	19.25
18"	22	21.25
20"	21.5	22.9
24"	21.25	27.26
26"	28	29.75
28"	23.25	31.3
30"	23.5	33.9
32"	28	36.13
36"	24.88	39.13
42"	42	47.13
48"	42	53.5
54"	42	59.63
63"	42	66.8



Fittings between 20" and 48" are designed to be fused on a 1648 or smaller field machine, If longer lengths are required, please contact Sandale Utility Products for special requirements.

DISCLAIMER - PLEASE READ

- 1) All dimensions approximate, subject to change without notice
 --Angle tolerance is +/- 2 degrees
 --All other dimensions to +/- 1"
- 2) This drawing only applicable if a copy is referred at time of order.
 --Without a copy of drawing, fitting construction may differ from that shown.
- 3) Subject to manufacturer's terms and conditions.

TITLE
 HDPE WALL ANCHORS
 PLAIN-END / BUTT-FUSE
 DR7-32.5 FULLY RATED
 PE4710

DATE
 3-19-2019