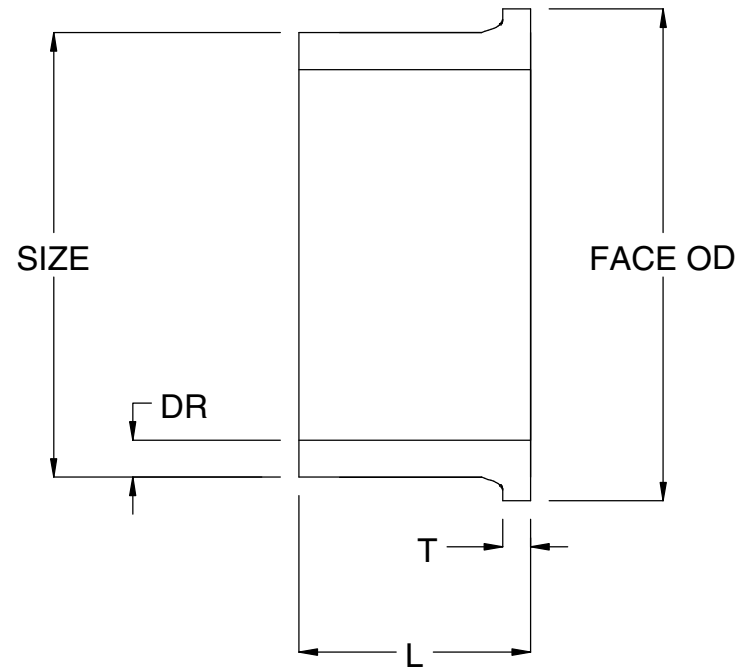


SIZE	DR	FACE	T	L
3/4"	17	2	0.20	4
1"	17	2.37	0.21	4
1-1/4"	17	2.75	0.25	4
1-1/2"	17	3.16	0.25-0.34	4-6
2"	17	3.63-3.94	0.34-0.39	6
3"	17	4.5-5	0.45-0.65	6
4"	17	5.81-6.13	0.54-0.76	6-7.13
5"	17	7.5	0.63	6
6"	17	8-8.5	0.77-0.98	8
8"	17	10.38-10.63	0.97-1.02	9.25-11
10"	17	12.5-13	1.22-1.38	9-12
12"	17	15-15.5	1.45-1.61	11-12
14"	17	16.75-17.5	1.5-1.67	11-12
16"	17	19.22-20	1.73-1.89	11.5-12
18"	17	19.88-21.12	1.93-2.05	11.5-12
20"	17	22.88-23.5	2.3	12
22"	17	25.6	2.5	12
24"	17	27.28-28	2.76	12-14
26"	17	29.5-30	3	12.75-15
28"	17	31.25-32.3	3.18-3.27	13-15
30"	17	33.75-34.3	3.41-3.52	13-15
32"	17	36.5	3.64	15
34"	17	38.5	4.72	15
36"	17	39.1-40.8	4.09-4.15	13.5-16.5
42"	17	47.13	4.77	21
48"	17	53.5	5.45	21



**DISCLAIMER - PLEASE READ**

- 1) All dimensions approximate, subject to change without notice  
 --Angle tolerance is +/- 2 degrees  
 --All other dimensions to +/- 1"
- 2) This drawing only applicable if a copy is referenced at time of order.  
 --Without a copy of drawing, fitting construction may differ from that shown.
- 3) Subject to manufacturer's terms and conditions.

TITLE

IPS DR17 HDPE FLANGE ADAPTERS

DATE 3-19-2016